

**GREIFEN**

*Passion for Excellence*

*Parasole*<sup>®</sup>  
Australia



*Sole Distributor for Malaysia & Singapore:*

**GREIFEN**

*Passion for Excellence*

**Greifen Marketing (M) Sdn Bhd** (240389-H)  
S1-00-18, Pangsapuri Sutramas, Persiaran Puchong Jaya Selatan,  
47100 Puchong Jaya, Selangor Darul Ehsan.  
Tel: 603-8076 4890 / 8070 8390 Fax: 603-8076 3890  
Email: greifen@ymail.com Website: www.greifen.com.my

*Manufactured by:*

*Parasole*<sup>®</sup>  
Australia

**Parasole Holdings Pty. Ltd. ABN 99 070 920 991**  
1302/12, Glen Street, Milsons Point,  
NSW 2061, Australia.  
Tel: (612) 9922 7322 Fax: (612) 9922 7521  
Email: parasole@wix.com.au / wparasole@yahoo.com.au  
Website: www.parasole.com.au



**Proven Australian Technology**



# Contents

Introduction	2
Door Furniture Lever Handle Designs	5
Tubular Leverset Designs	15
Cylindrical Knobset and Deadbolt Designs	19
Mortice Lockcase Designs	23
Door Hinges Designs	27
Profile Cylinder Designs	30
Accessories Designs	33
Other Information	43



# *Parasole*<sup>®</sup> Australia

**Parasole**<sup>®</sup> is a registered trademark of Parasole Holdings Pty. Ltd. (ABN 99 070 920 991) Australia, one of the leading manufacturers of architectural hardware, high security locking system and electro mechanical lock technology in Australia.

**Parasole**<sup>®</sup> products are designed and manufactured to provide high security performance, reliability and functionality.

**Parasole**<sup>®</sup> has established its brand position as a brand of professional architectural hardware and locking system due to its intimate design, outstanding quality and more importantly its value-for-money competitive pricing. Obviously, it has gained its reputation of being a choiced brand of most specifiers and architects throughout the Asia Pacific region.

The value of **Parasole**<sup>®</sup> brand has been improved with our innovative product design principles. The proper design does not just lie in good product shape but stands on finding the balance between shape and function.

With strong originality and functionality design attitude, listening to feedback from market, focusing on quality control, **Parasole**<sup>®</sup> Australia can truly ensure its customers that its products conform to the trend of today's architectural hardware requirements and proven security locking systems.

**Parasole**<sup>®</sup>....the preferred Australian Brand.



**Proven Australian Technology**



## Parasole® Distribution Network, Australia



Parasole® products are designed and manufactured to provide high security performance, reliability and functionality.

All Parasole® Stainless Steel products specified are in compliance with 304 grade architectural standards.

# *Parasole*<sup>®</sup> Australia

Product Range

*Cylindrical Knobset*

*Mortise Lockcase*

*Mortise Dead Lock*

*Tubular Leverset*

*Lever Handle*

*Door Hinge*

*Padlock*

*Pull Handle*

*Accessories*

*Other Information*



Parasole<sup>®</sup>....the preferred Australian Brand.



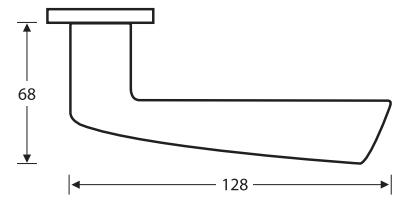
*Parasole*<sup>®</sup>  
Australia

Door Furniture Lever Handle  
Designs

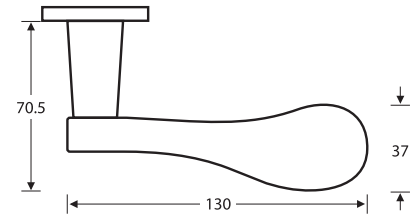
**SOLID STAINLESS STEEL LEVER HANDLES**

Grade: 304 Stainless Steel  
(Material content tested by S.I.R.I.M)

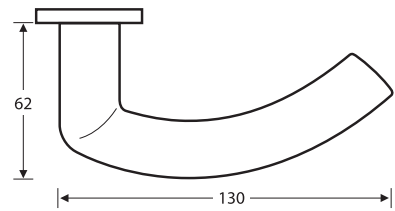
**P002**



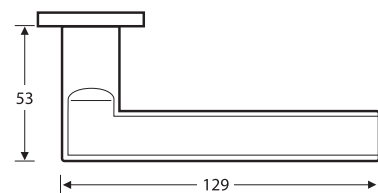
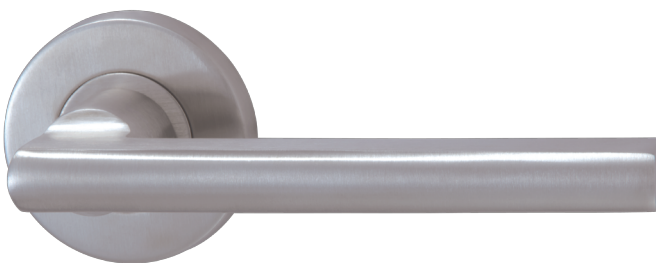
**P020**



**P026**



**P035**

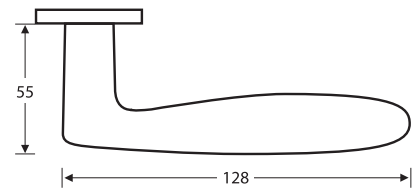


**SOLID STAINLESS STEEL LEVER HANDLES**

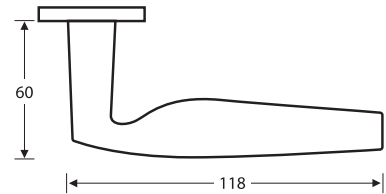
Grade: 304 Stainless Steel  
(Material content tested by S.I.R.I.M)



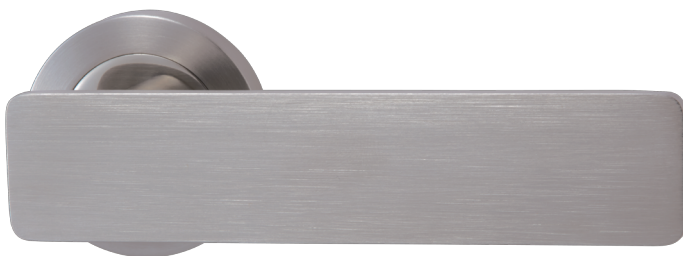
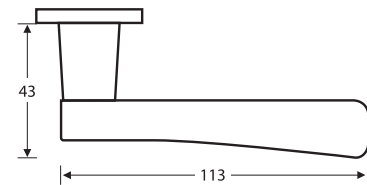
**P051**



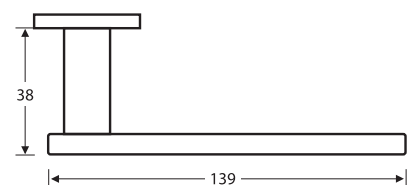
**P057**



**P134**



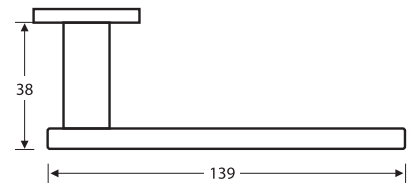
**P162**



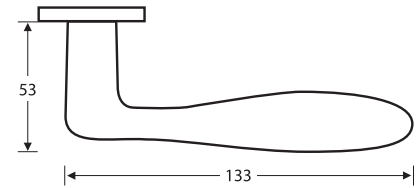
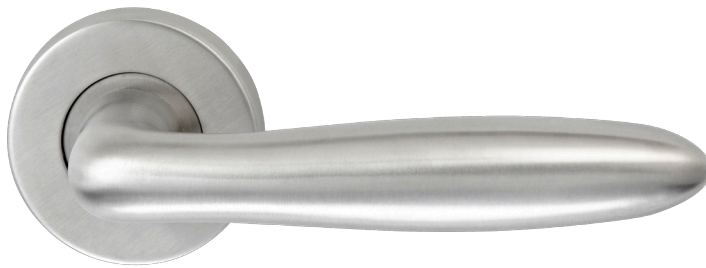
**SOLID STAINLESS STEEL LEVER HANDLES**

Grade: 304 Stainless Steel  
(Material content tested by S.I.R.I.M)

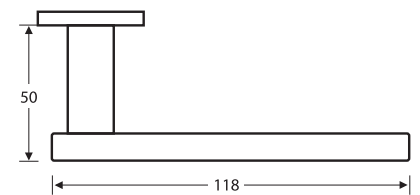
**P162**



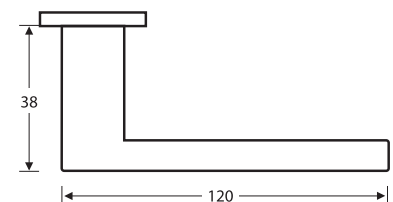
**P0260**



**P166-SQ**



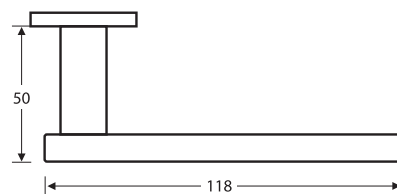
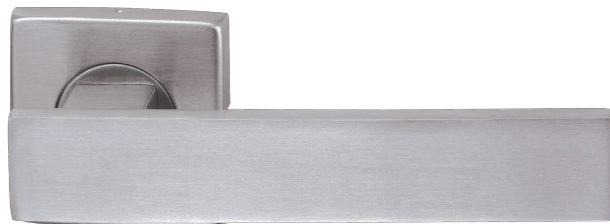
**P177-SQ**



**SOLID STAINLESS STEEL LEVER HANDLES**

Grade: 304 Stainless Steel  
(Material content tested by S.I.R.I.M)

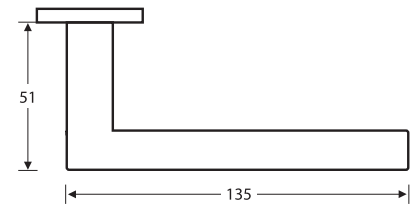
**P195-SQ**



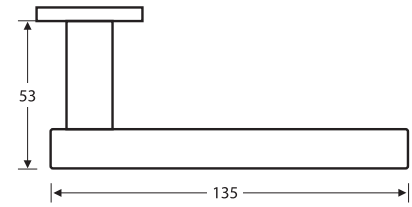
**HOLLOW STAINLESS STEEL LEVER HANDLES**

Grade: 304 Stainless Steel  
(Material content tested by S.I.R.I.M)

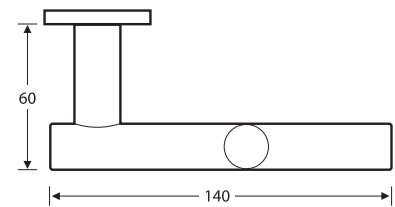
**P048**



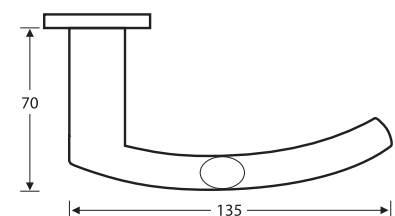
**P073**



**P1105**

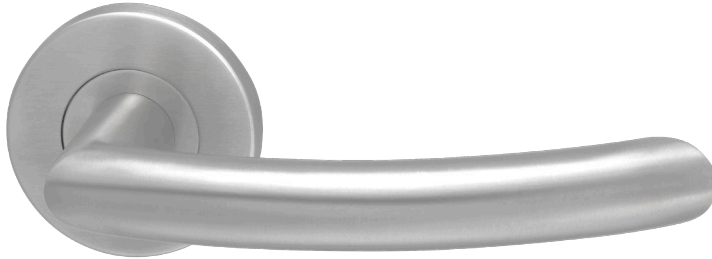


**P1107**

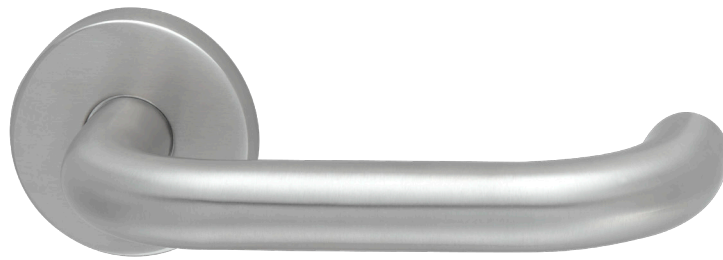
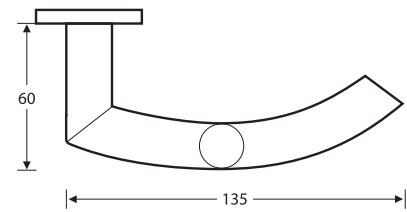


**HOLLOW STAINLESS STEEL LEVER HANDLES**

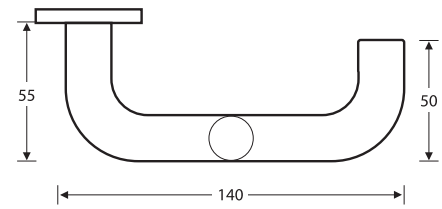
Grade: 304 Stainless Steel  
(Material content tested by S.I.R.I.M)



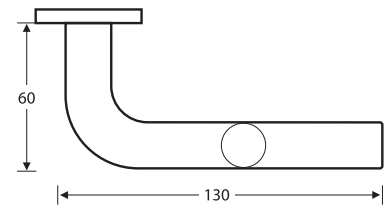
**P1110**



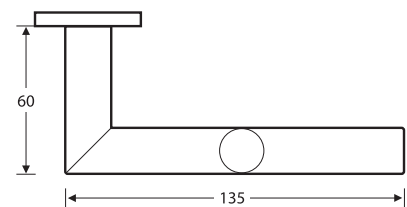
**P1130**



**P1170**



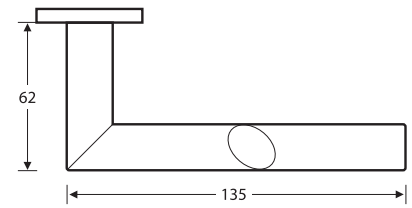
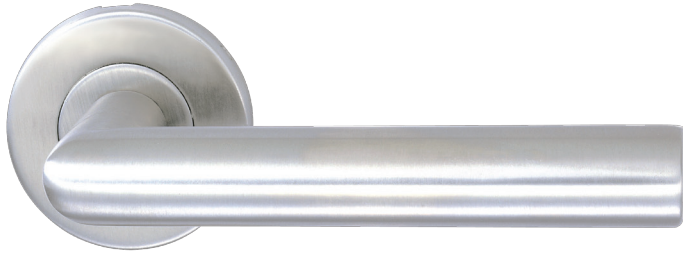
**P1180**



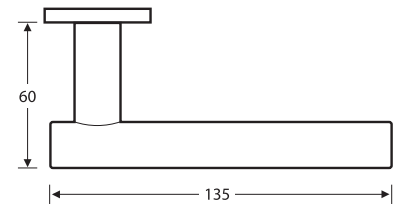
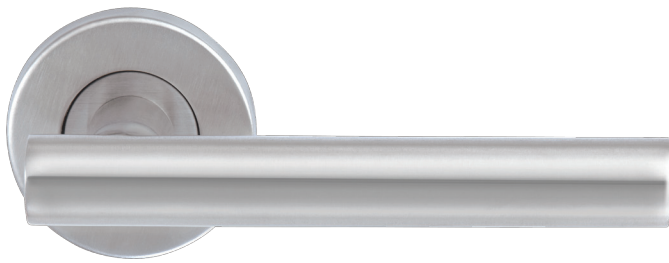
**HOLLOW STAINLESS STEEL LEVER HANDLES**

Grade: 304 Stainless Steel  
(Material content tested by S.I.R.I.M)

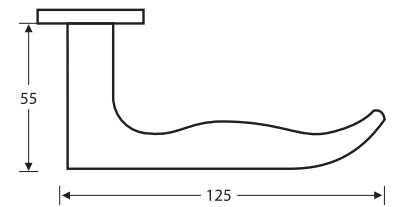
**P1190**



**P1012**



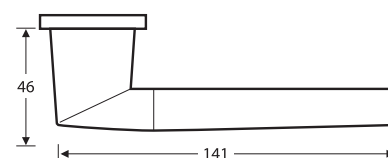
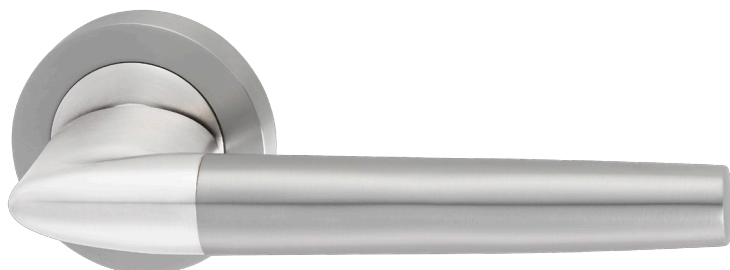
**P1150**



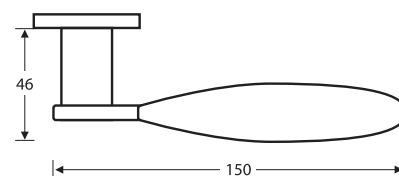
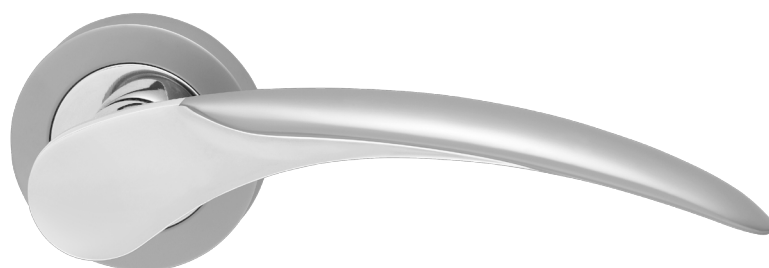
**TWO-TONE STAINLESS STEEL LEVER HANDLES**

Grade: 304 Stainless Steel / Zamak  
(Material content tested by S.I.R.I.M)

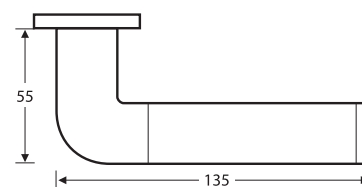
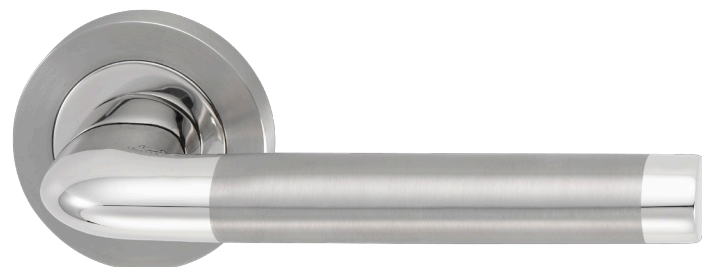
**P240**



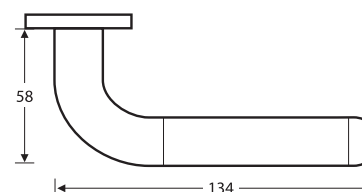
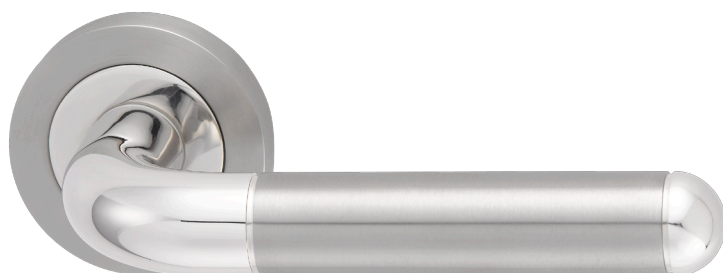
**P250**



**P320**

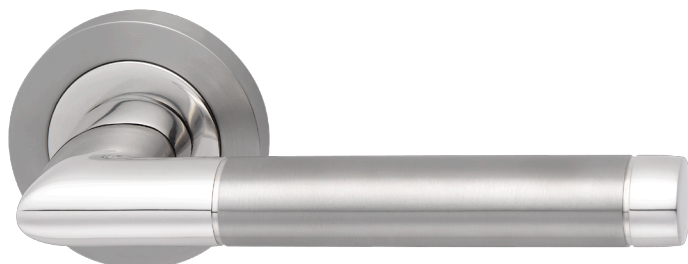


**P350**

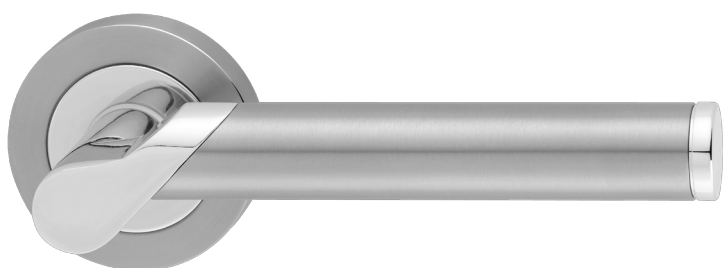
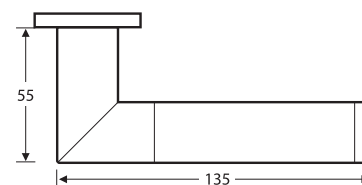


**TWO-TONE STAINLESS STEEL LEVER HANDLES**

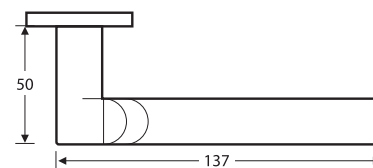
Grade: 304 Stainless Steel / Zamak  
(Material content tested by S.I.R.I.M)



**P370**



**P380**





*Parasole*<sup>®</sup>  
Australia

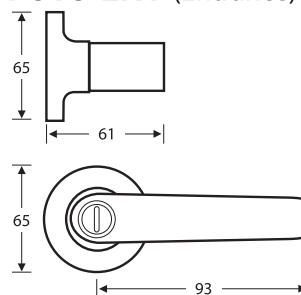
Tubular Leverset Designs

**TUBULAR LEVERSET**

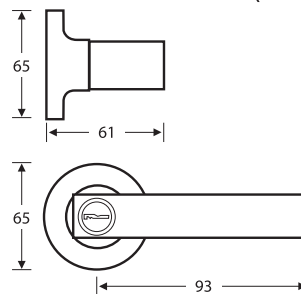
Zinc Diecast



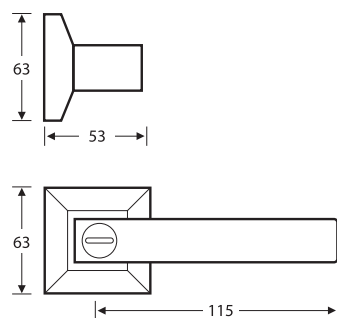
**P818-BK** (Privacy)  
**P818-ENT** (Entrance)



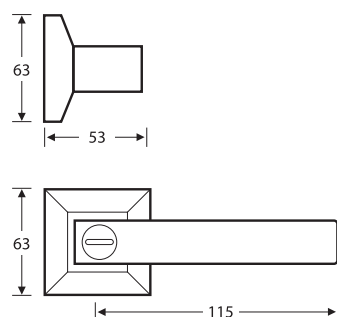
**P2030-BK-RD** (Privacy)  
**P2030-ENT-RD** (Entrance)



**P2030-BK-SQ** (Privacy)



**P2030-ENT-SQ** (Entrance)

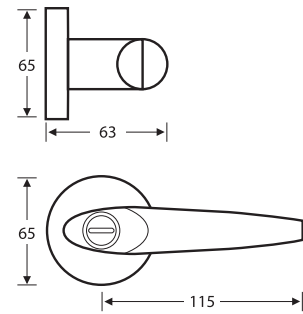


**TUBULAR LEVERSET**

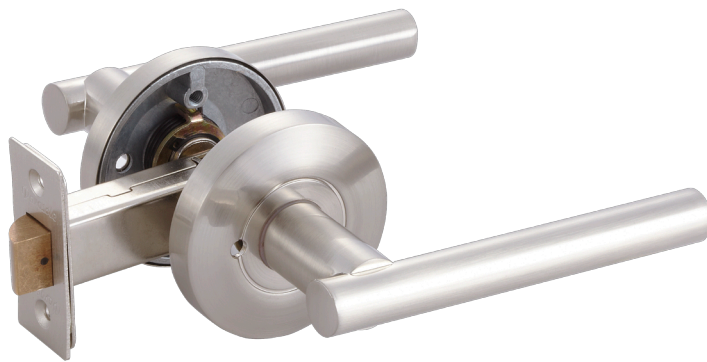
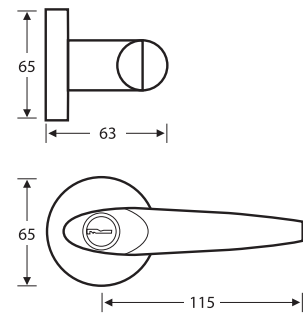
Zinc Diecast



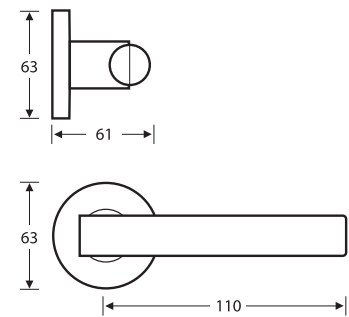
**P2060-BK** (Privacy)



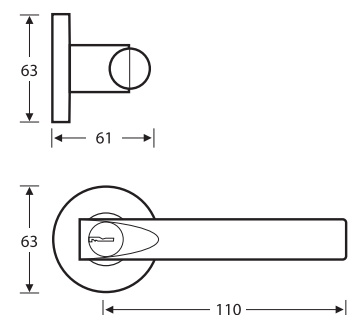
**P2060-ENT** (Entrance)



**P-GIRONA-BK** (Privacy)



**P-GIRONA-ENT** (Entrance)

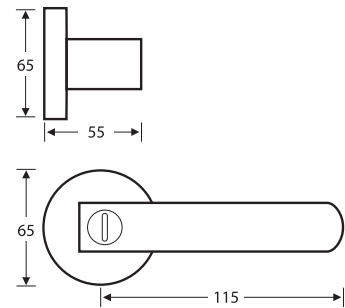


**TUBULAR LEVERSET**

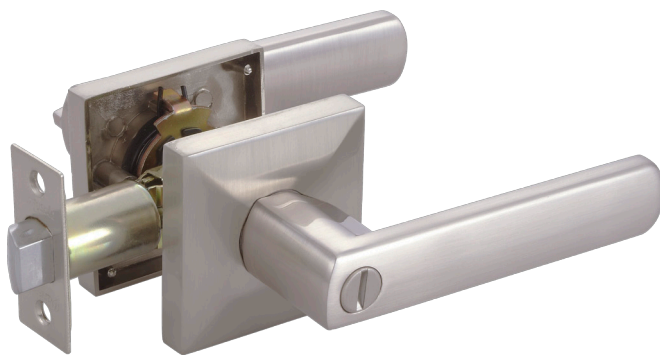
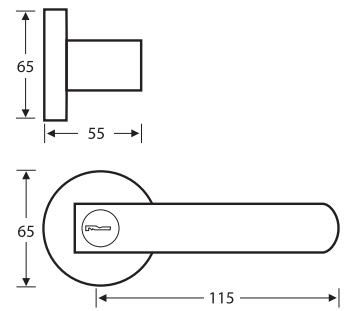
Zinc Diecast



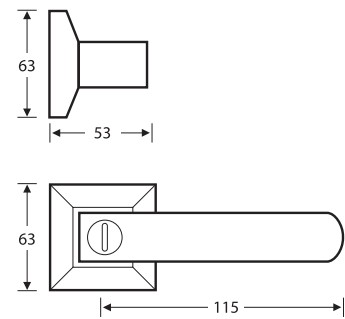
**P-POMBAL-BK-RD** (Privacy)



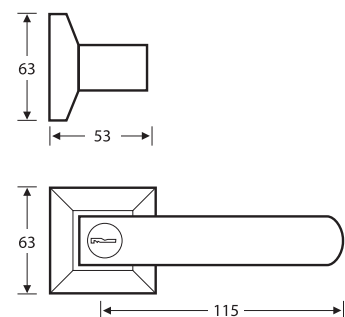
**P-POMBAL-ENT-RD** (Entrance)



**P-POMBAL-BK-SQ** (Privacy)



**P-POMBAL-ENT-SQ** (Entrance)



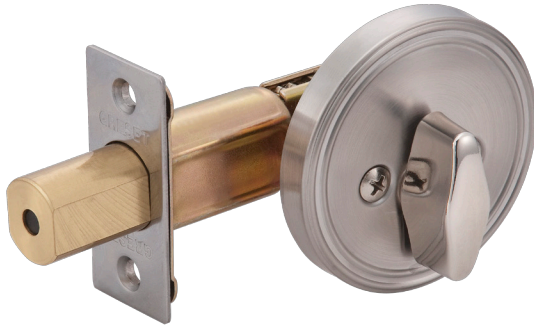


*Parasole*<sup>®</sup>  
Australia

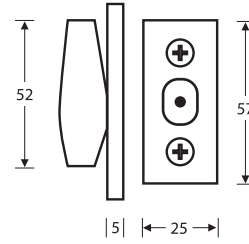
Cylindrical Knobset and  
Deadbolt Designs

**CYLINDRICAL KNOBSET AND DEADBOLT**

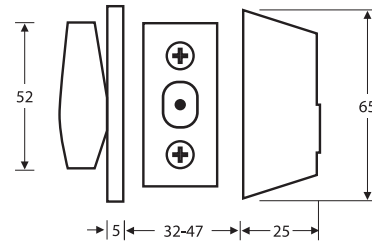
Grade: 304 Stainless Steel  
(Material content tested by S.I.R.I.M)



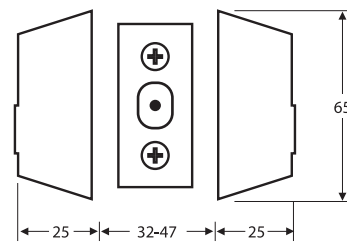
**Half Thumbturn Deadbolt  
LS-1010**



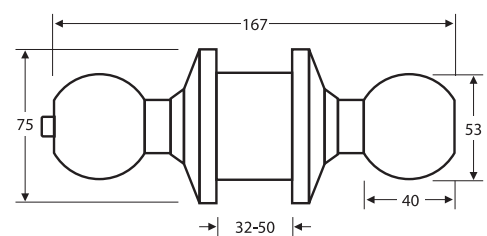
**Single Cylinder /  
Thumbturn Deadbolt  
LS-2010**



**Double Cylinder Deadbolt  
LS-2011**



**Knobset  
P5000-ENT (Entrance)**

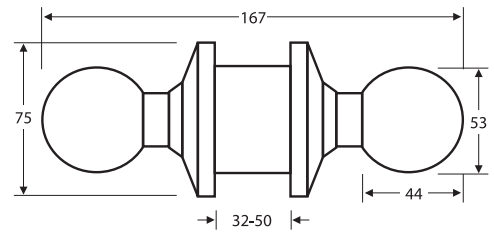


**CYLINDRICAL KNOBSET AND DEADBOLT**

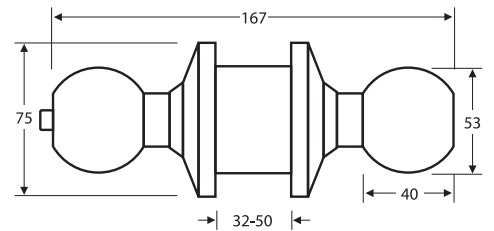
Grade: 304 Stainless Steel  
(Material content tested by S.I.R.I.M)



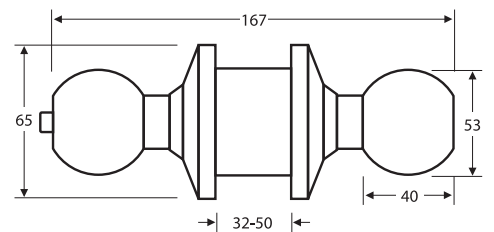
**Knobset**  
**P5010-PS** (Passage)



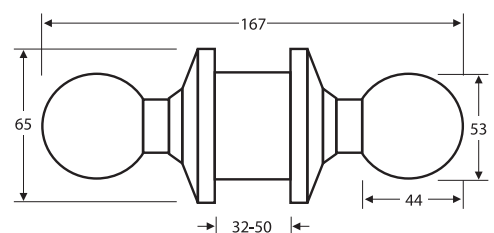
**Knobset**  
**P5030-BK** (Privacy)



**Knobset**  
**P7000-ENT** (Entrance)



**Knobset**  
**P7010-PS** (Passage)

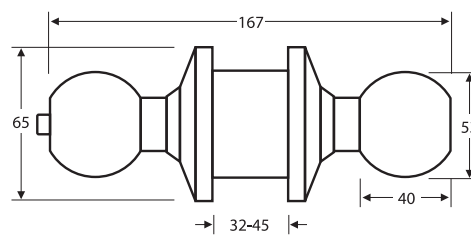


**CYLINDRICAL KNOBSET AND DEADBOLT**

Grade: 304 Stainless Steel  
(Material content tested by S.I.R.I.M)



**Knobset**  
**P7030-BK** (Privacy)





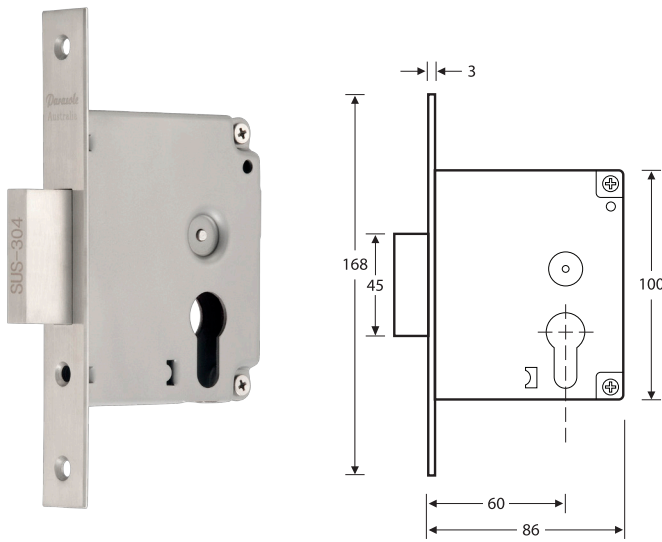
*Parasole*<sup>®</sup>  
Australia

Mortice Lockcase Designs

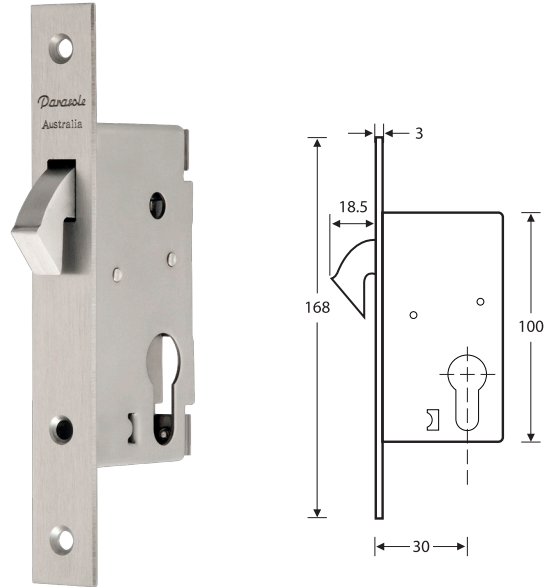
**MORTICE LOCKCASE**

Grade: 304 Stainless Steel  
(Material content tested by S.I.R.I.M)

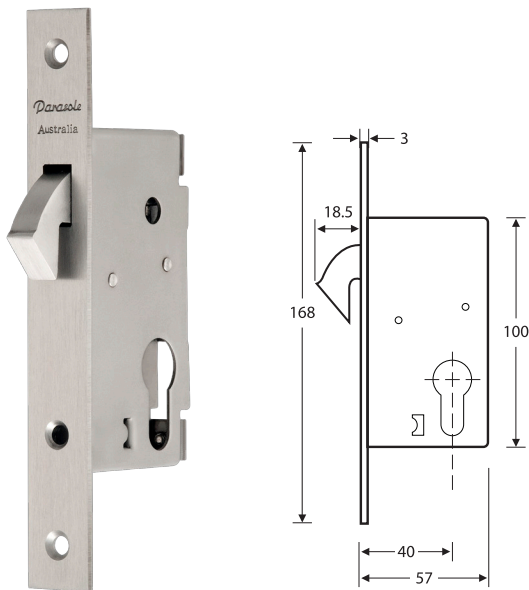
**Deadlock  
P118pz-60mm**



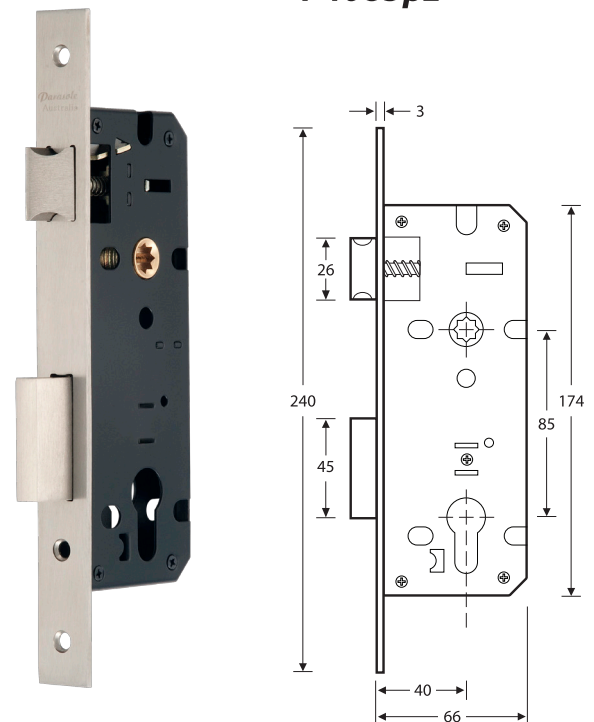
**Hooklock  
P119pz-30mm**



**Hooklock  
P119pz-40mm**



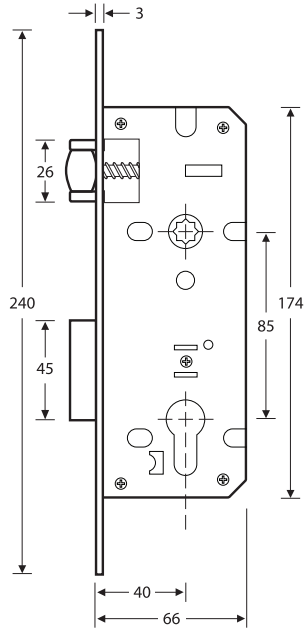
**Narrow Mortice Lock  
P4085pz**



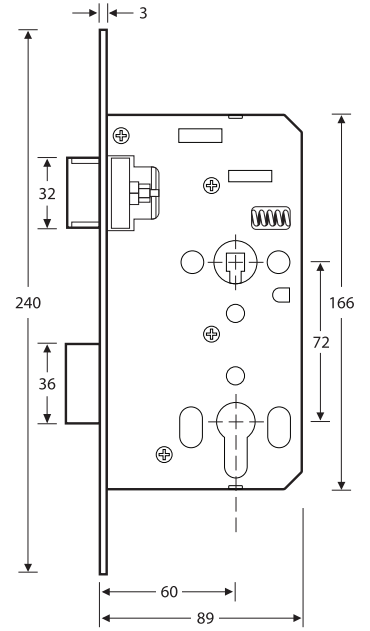
**MORTICE LOCKCASE**

Grade: 304 Stainless Steel  
(Material content tested by S.I.R.I.M)

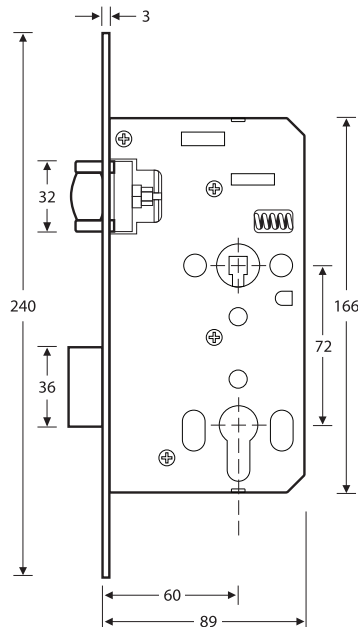
**Narrow Roller Latch  
Mortice Lock  
P4085pz-RL**



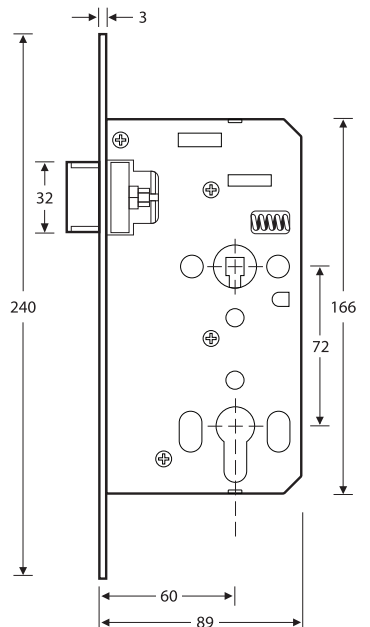
**Mortice Lock  
P6072pz**



**Roller Latch Mortice  
Lock  
P6072pz-RL**



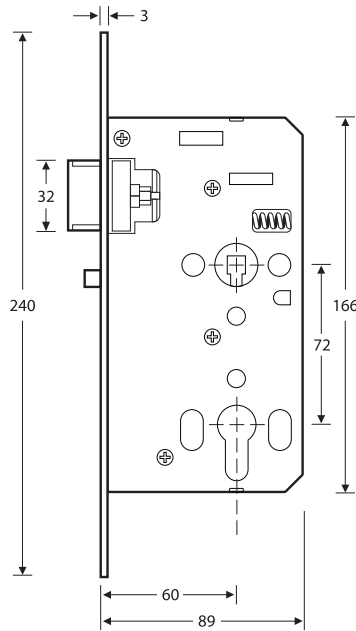
**Mortice Lock  
P6072ps  
Passage Function**



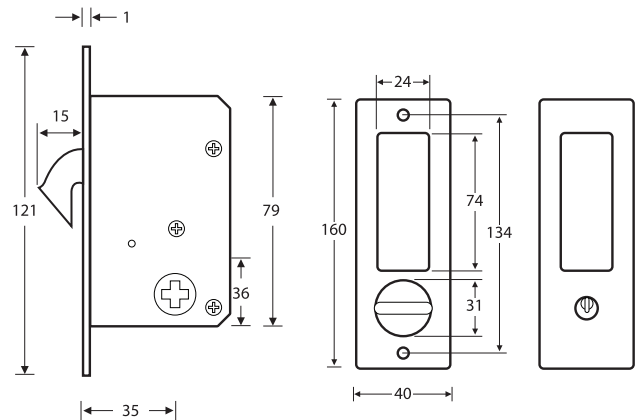
**MORTICE LOCKCASE**

Grade: 304 Stainless Steel  
(Material content tested by S.I.R.I.M)

**Mortice Lock  
P6072pz-Classroom**



**Sliding Door Hook  
Lock with Flush Pull  
P2001 / SYA600**





*Parasole*<sup>®</sup>  
Australia

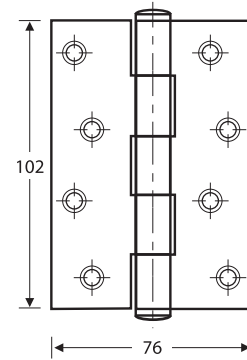
Door Hinges Designs

**DOOR HINGE**

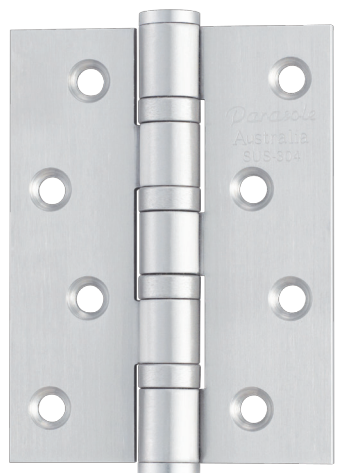
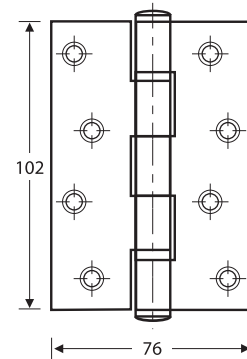
Grade: 304 Stainless Steel  
(Material content tested by S.I.R.I.M)



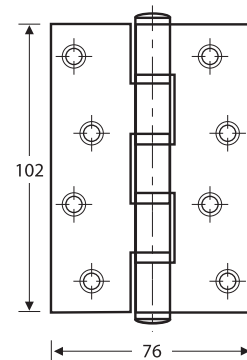
**102x76x2mm**



**102x76x3mm2BB**



**102x76x3mm4BB**

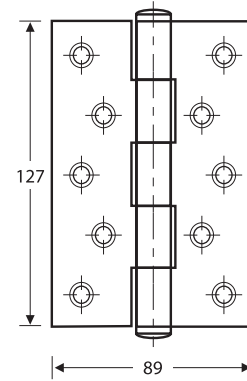


**DOOR HINGE**

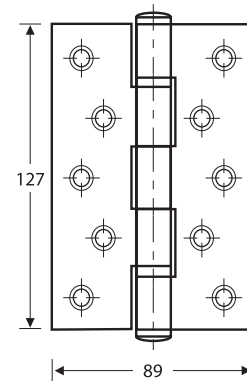
Grade: 304 Stainless Steel  
(Material content tested by S.I.R.I.M)



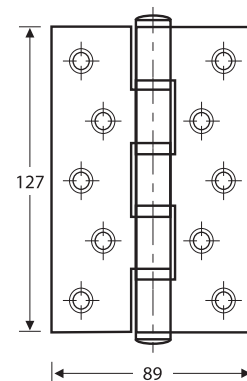
**127x89x2.5mm**



**127x89x2.5mm2BB**



**127x89x3mm4BB**





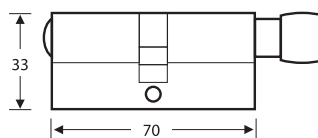
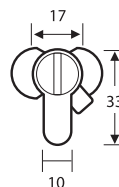
*Parasole*<sup>®</sup>  
Australia

Profile Cylinder Designs

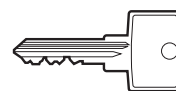
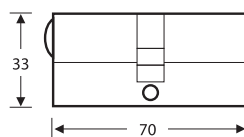
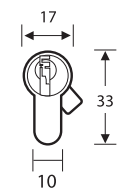
**PROFILE CYLINDER**



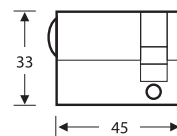
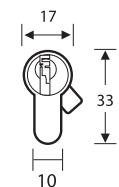
**Privacy Cylinder  
CAZ00**



**Double Cylinder  
CAZ01**



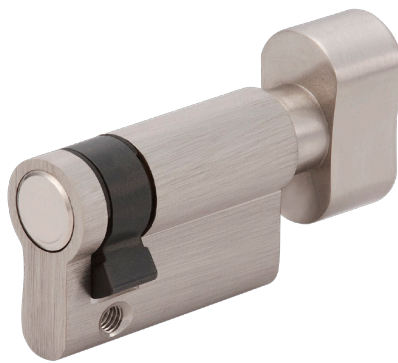
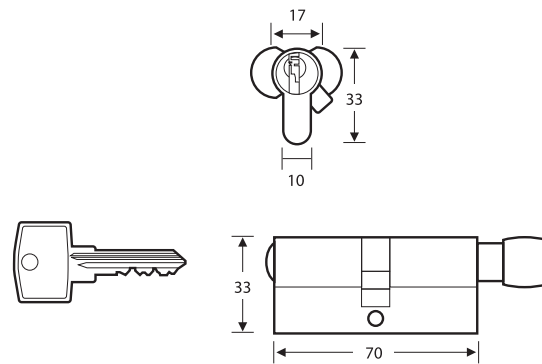
**Half Cylinder  
CAZ02**



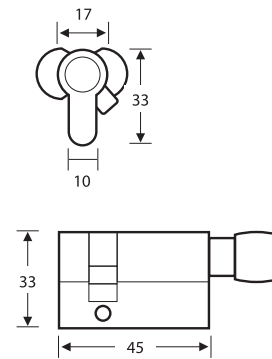
**PROFILE CYLINDER**



**Thumbturn Cylinder  
CAZ04**



**Half Thumbturn Cylinder  
CAZSTT**





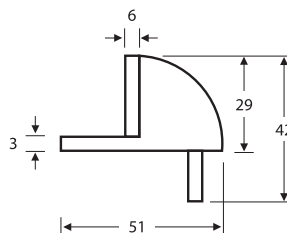
*Parasole*<sup>®</sup>  
Australia

Accessories Designs

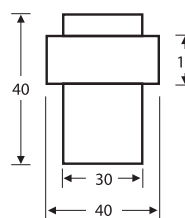
**ACCESSORIES**



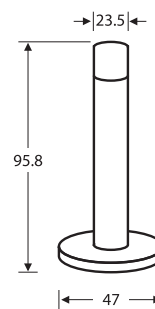
**Door Stopper  
DS-003**



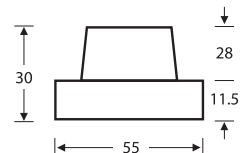
**Door Stopper  
DS-006**



**Door Stopper  
DS-022**



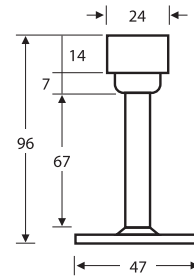
**Door Stopper  
DS-450**



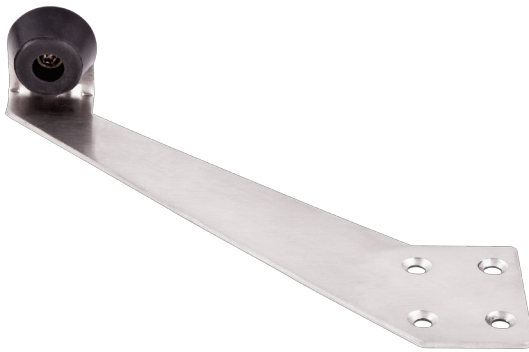
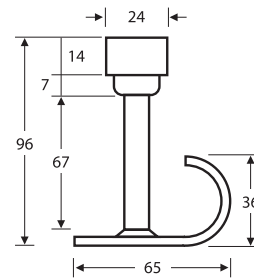
**ACCESSORIES**



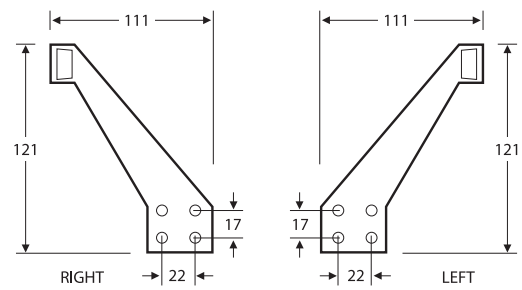
**Door Stopper  
106 SS**



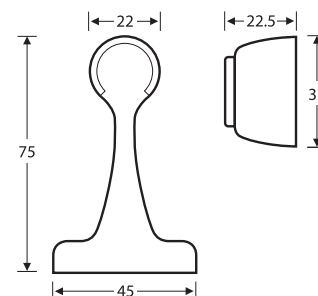
**Hat & Coat Hook  
105 SS**



**Frame Mounted  
Door Stopper**



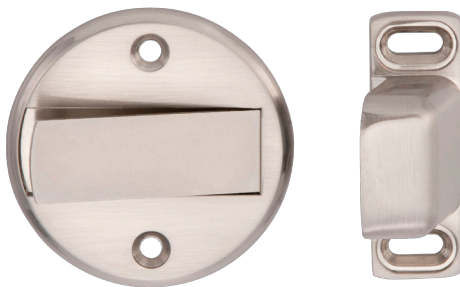
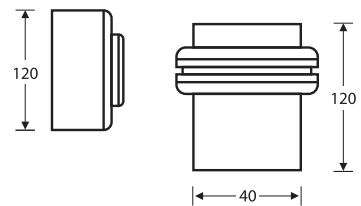
**Magnetic Door Stopper  
MS-1**



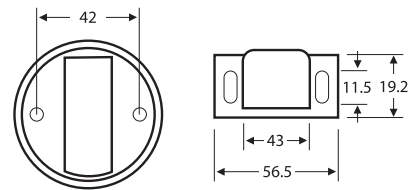
**ACCESSORIES**



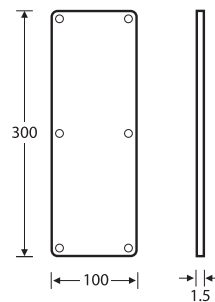
**Magnetic Door Stopper  
MS-104**



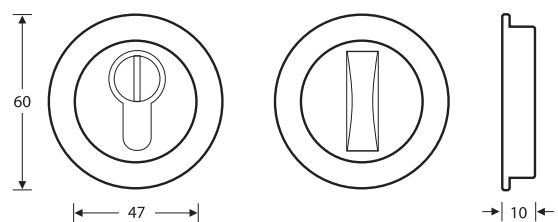
**Magnetic Door Stopper  
MS-020**



**Push Plate  
100x300x1.5mm SS**



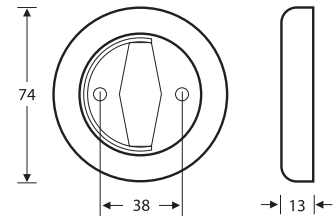
**Round Flush Pull For  
Mortice Deadlock / Hooklock  
P2002**



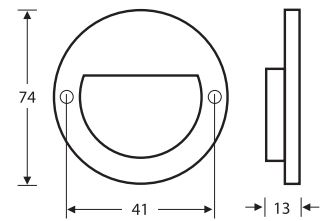
**ACCESSORIES**



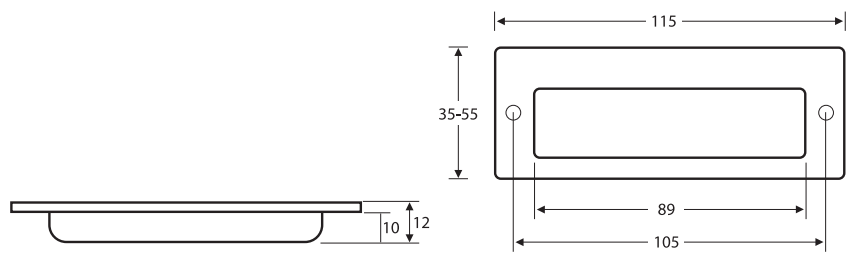
**Flush Pull Ring  
201 SS**



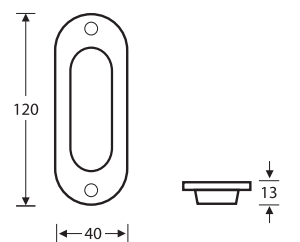
**Flush Pull  
4003 SS**



**Flush Pull  
4211 SS**



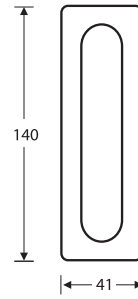
**Flush Pull  
4212 SS**



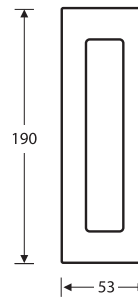
**ACCESSORIES**



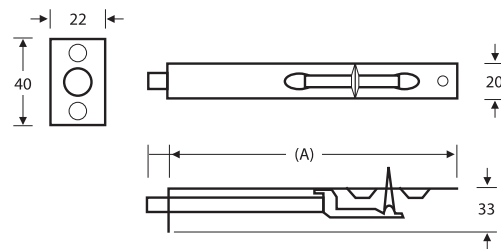
**Flush Pull  
4213 SN**



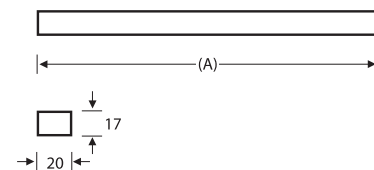
**Flush Pull  
4251 SS**



**Lever Type Flush Bolt  
\*A-6" & 12" SS**

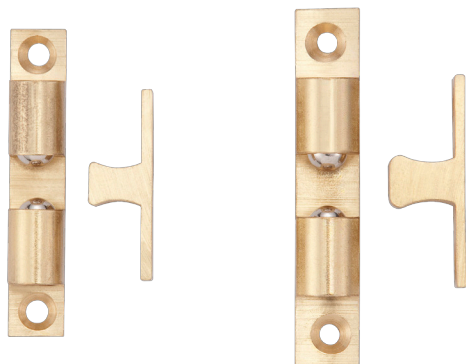
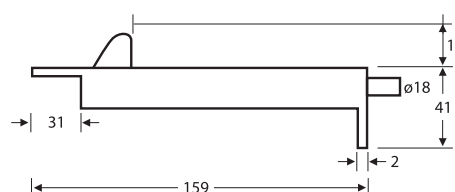


**Box Type Flush Bolt  
\*A-8", 12", 18", 24" & 40"**

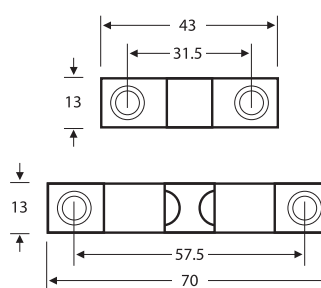




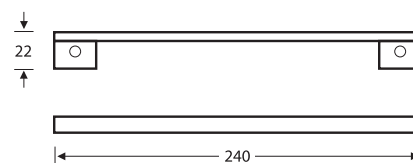
**Auto Flush Bolt  
150 SS**



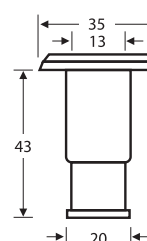
**Brass Ball Catch  
60mm/70mm**



**Rebated Part  
for Mortice Lock**



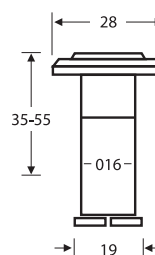
**Dust Cover  
DS-35**



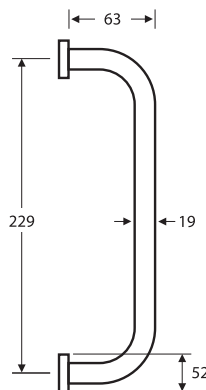
**ACCESSORIES**



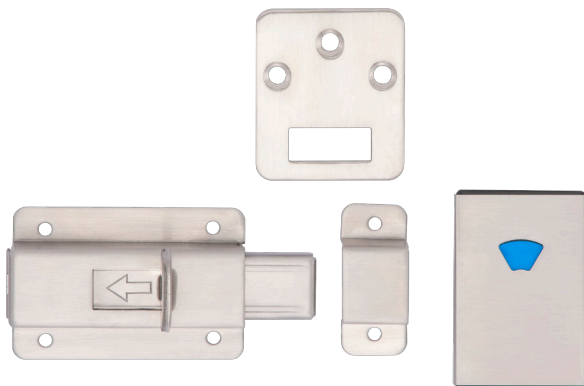
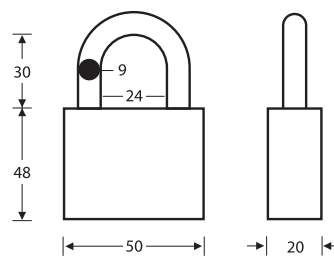
**Door Viewer  
DV-180**



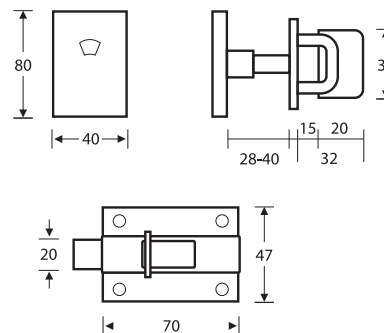
**Pull Handles  
229x19mm**



**Padlock  
PA30**



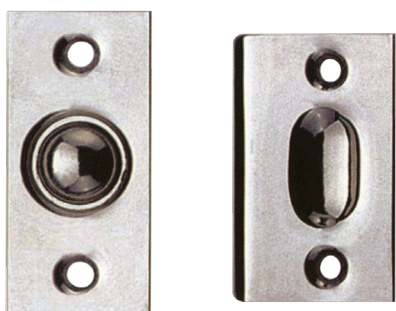
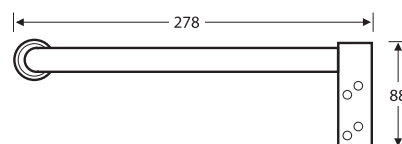
**Indicator Bolt  
P-11 W.C**



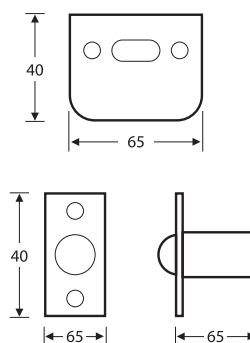
**ACCESSORIES**



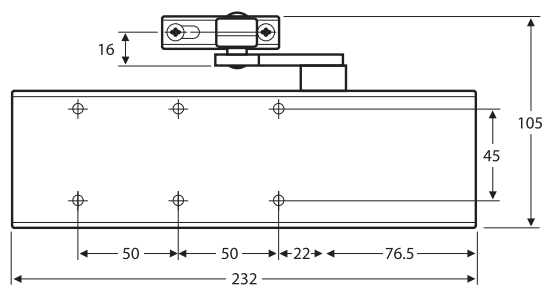
**Door Selector  
SF-250**



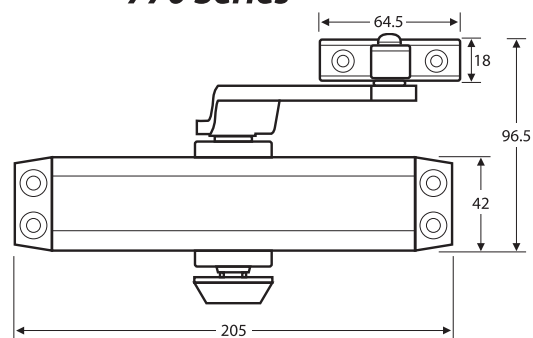
**Roller Ball Latch**



**'LEADO' Door Closer  
730 Series**



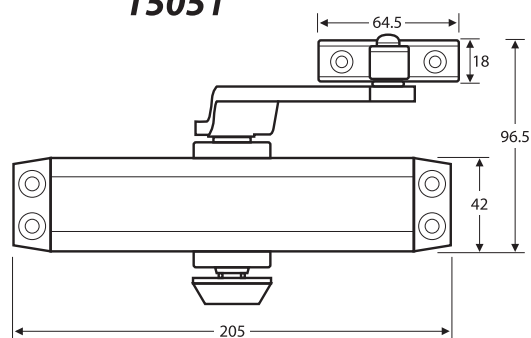
**'LEADO' Door Closer  
770 Series**



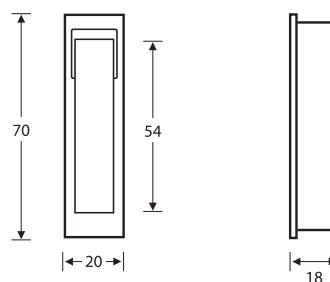
**ACCESSORIES**



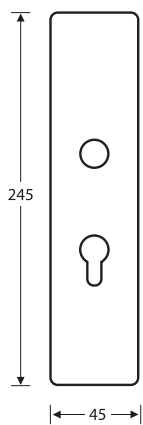
**Parasole  
T5051**



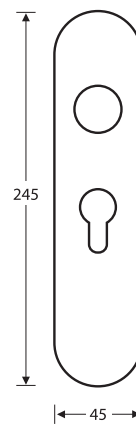
**Edge Flush Pull  
P255**



**Back Blate-SQ  
P1410**



**Back Blate-RR  
P1415**





*Parasole*<sup>®</sup>  
Australia

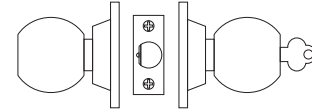
Other Information

## LOCK FUNCTIONS

### CYLINDRICAL KNOBSET

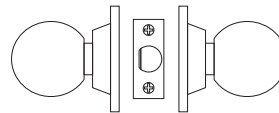
#### Entrance Lockset

Key unlocks the outside knob.  
Push button inside locks the outside knob.  
Lock will automatically unlock when inside knob is activated.  
Auxiliary bolt deadlatches the latch enters the strike plate.



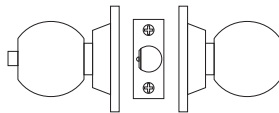
#### Passage Set

Latch retracted by both knobs at all times.



#### Privacy Lockset

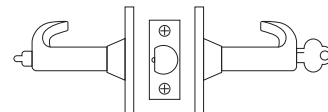
Push button inside locks the outside knob. Inside knob active at all times.  
Emergency release outside can be activated by a coin or screwdriver.



### TUBULAR LEVERSET

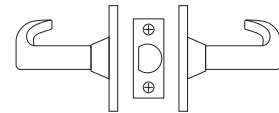
#### Entrance Lockset

Key locks and unlocks both levers.  
Turnbutton locks and unlocks both levers.  
Auxiliary bolt deadlatches the latch when the latch enters the strike plate.



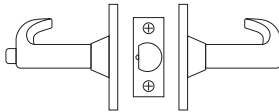
#### Passage Set

Latch retracted by both levers at all times.



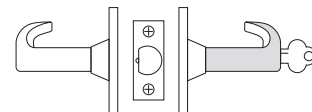
#### Privacy Lockset

Turnbutton inside locks the both levers.  
Emergency release outside can be activated by a coin or screwdriver.



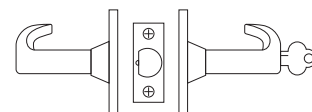
#### Storeroom Lockset

Key outside retracts the latch.  
Outside knob rigid at all times.  
Inside knob active at all times.  
Auxiliary bolt deadlatches the latch when the latch enters the strike plate.



#### Classroom Lockset

Key outside locks and unlocks outside knob.  
Inside knob active at all times.  
Auxiliary bolt deadlatches the latch when the latch enters the strike plate.



## KEYING INFORMATION

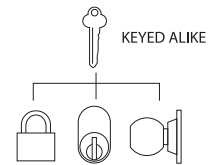
### Special Keying

We can cater to any specific keying requirement.

A variety of systems are available, these include:

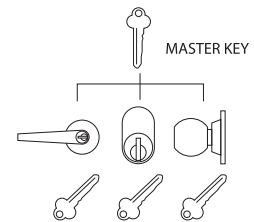
#### Keyed Alike

A keyed alike system is one where 2 or more locks are to be operated by the same key.



#### Master Key System

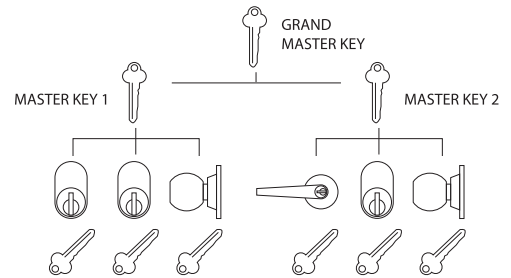
A master key system is one in which, each lock has its own individual key, which operates that lock only and no other. Within the system each lock is built to a master key which will open all locks in the group. Within the master key system locks can be grouped and keyed alike if required. These locks would still be operated by the master key.



Suitable for aged care, rooming houses, etc...

#### Grand Master Key System

Each lock has an individual key, which operates that lock only, and no other, but the locks are divided into 2 or more groups. Each group is operated by a master key, which operates all locks in that group, but will not operate other group. However, the grand master key will operate all locks in all group. Which each group, locks can be keyed alike if required. These locks would still be operated by the grand master key system.



Suitable for schools, factories, office buildings, etc...

#### Great Grand Master Key System

This system applies where 2 or more grand master key systems are required, with each grand master key system able to be operated by the great grand master key.

